



**NOTE:** in the Windows Server 2008 R2 64 bit remember these facts ...

C:\Windows\SysWOW64 is the 32 bit server executables area

C:\Windows\System32 is the 64 bit server executables area

C:\Program Files (x86) is the 32 bit programs area

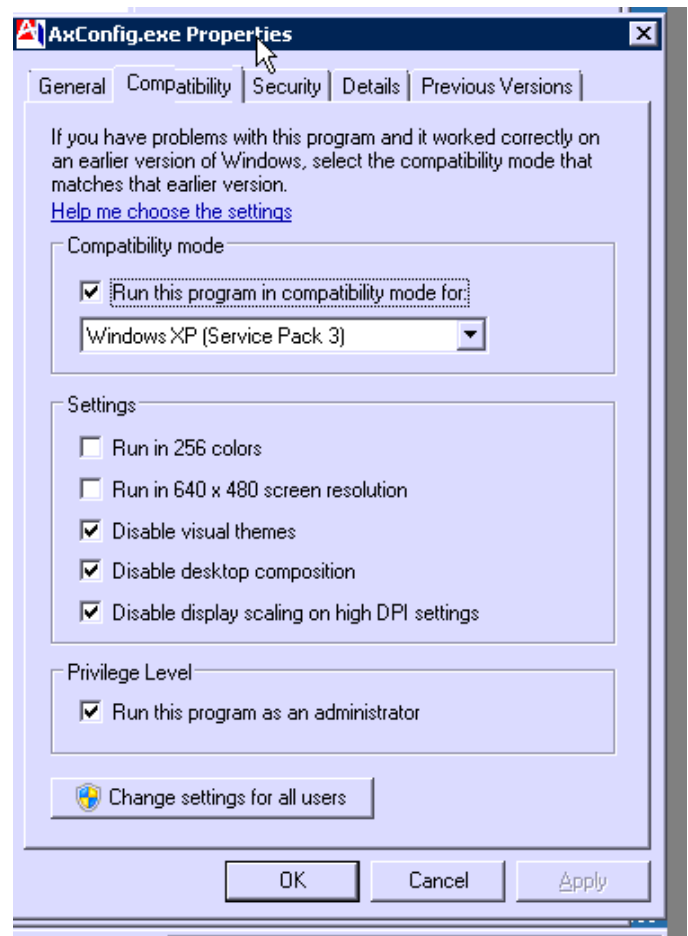
C:\Program Files is the 64 bit programs area

There are 2 Microsoft Registry Servers regsvr32.exe programs. One is 64 bit and one is 32 bits, but they are the same exe name. The 64 bit regsvr32.exe runs as default. The 32 bit one is located in C:\Windows\sysWOW64, and you must move to that folder to run it.

Run all setup programs as "Run as Administrator".

After installation, check that all AxConfig, AxEmail, PACE executables are set to run as administrator, and under Windows XP SP3 as follows, by performing a right click

...

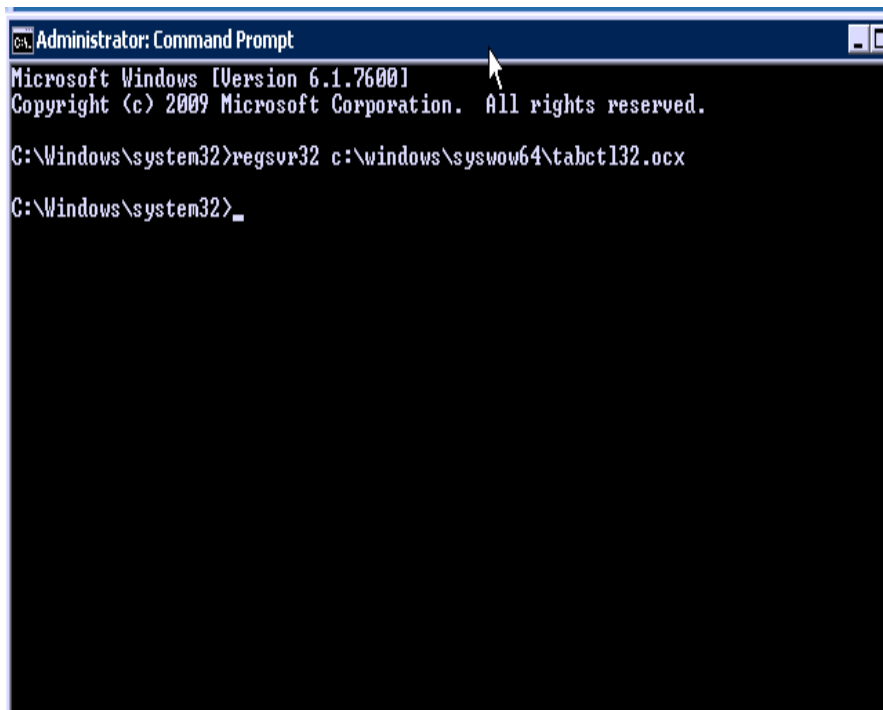
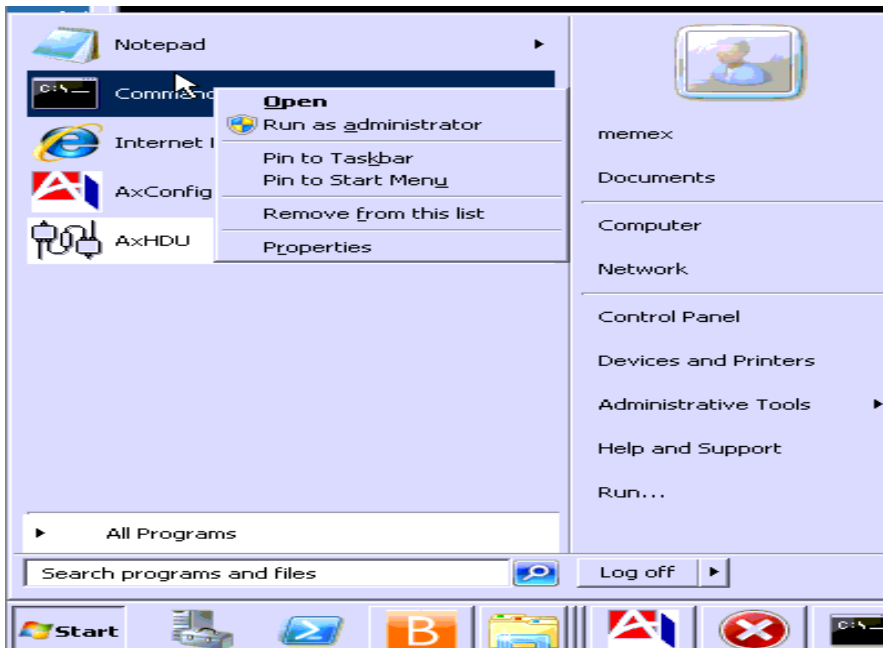


## Installing DLL and OCX files

You cannot register .DLL or .OCX files unless REGSVR32.exe is Run as Administrator ...

Click start, find the CMD box, right click, select "Run as Administrator"

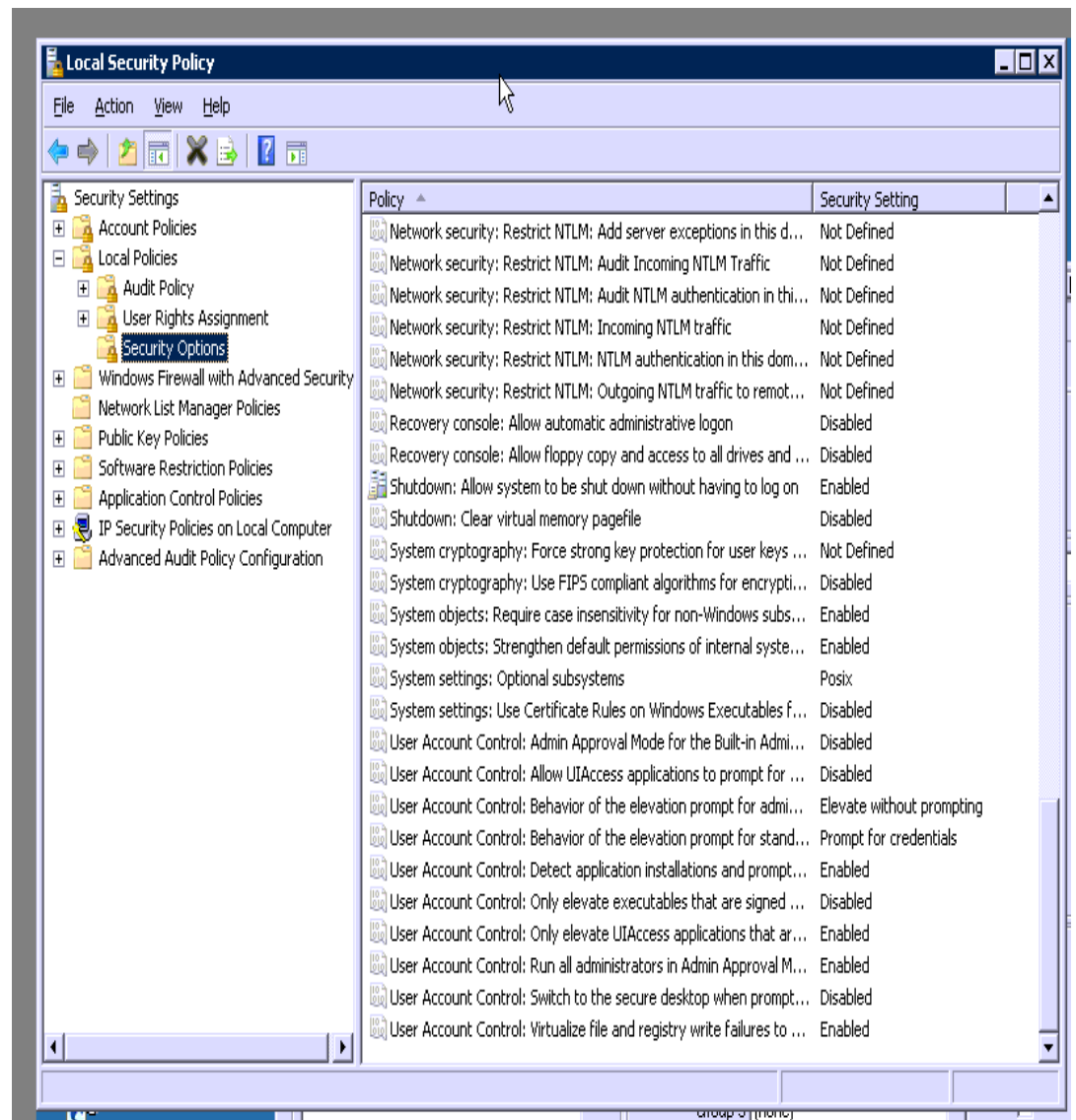
Go to C:\Windows\System32, run REGSVR#2.exe from here (the 64 bit version)



## INSTALLING com0com

Installing com0com requires using the 64 bit version of the software.

Run the setup.exe as "Run as Administrator". First though, follow the README.txt for the 64 bit install, especially the section for "bcdedit -set TESTSIGNING ON", because it is by default OFF. This requires a server reboot after turning it ON. You also may need to DISABLE the USER ACCOUNT CONTROL located at Admin Tools\Local Security\Security Options as per



below ... be sure to document what was DISABLED, then ENABLE them after com0com is installed ... this requires a reboot of the server too.

## **INSTALLING AxConfig, AxEmail, SQL Viewer**

Run the AxConfig setup as "Run as Administrator".

Installing AxConfig gives error when trying to register c:\Windows\System32\MSHFLXGD.ocx. The problem is that it is redirected to c:\Windows\sysWOW64, and must be regsvr32's manually per the notes above. See MS note for error 0x8002801c

Installing AxConfig gives error when trying to register c:\Windows\System32\TABCTL32.ocx. The problem is that it is redirected to c:\Windows\sysWOW64, and must be regsvr32's manually per the notes above. See MS note for error 0x80070005

For Tosoh, the PACE data resides on drive E:. Ensure that all settings are pointing to drive E:. Double check the .ini files for this too.

Once AxConfig is installed, go into BOTH the C:\Program Files (x86)\AxConfig folder and manually configure ALL .exe files to "Run as Administrator" and under Windows XP SP3.

## **INSTALLING Pace**

Run the PACE setup as "Run as Administrator".

Installing PACE gives error when trying to register c:\Windows\System32\AWKONE.ocx. The problem is that it is redirected to c:\Windows\sysWOW64, and must be regsvr32's manually per the notes above.

Installing PACE gives error when trying to register c:\Windows\System32\SIZERONE.ocx. The problem is that it is redirected to c:\Windows\sysWOW64, and must be regsvr32's manually per the notes above.

Installing PACE gives error when trying to register c:\Windows\System32\DARTSOCK.dll. The problem is that it is redirected to c:\Windows\sysWOW64, and must be regsvr32's manually per the notes above.

For Tosoh, install PACE data on drive E:. While PACE asks where the data is to be directed, you have to go in and MODIFY all the .ini files to point to E: too.

Once PACE is installed, go into BOTH the E:\WMS\_Node and E:\WMS\_Sys folders and manually configure ALL .exe files to "Run as Administrator" and under Windows XP SP3.

There appears to be a problem with PACE copying the .RPT report files from E:\WMS\_Sys to E:\WMS\_Node when the report generator starts up. As a result, a modification was made to the table E:\WMS\_Node\wmsnode\REPORT\_LAYOUTS, to include all the standard Memex/Pace reports we are supporting. The program runs fine in the end.

A folder named E:\PaceBackupFiles was created for midnite backups of the databases.

## **INSTALLING Crystal Reports Runtime**

Installing Crystal Reports Runtime copies the files into a BIN folder.

However registering the .dlls fails. As a result either a manual regsrv32.exe <filename> on all of them must be performed, or a (untried) batch file used to perform the regsvr32.exe function. There are 173 files, but only about 50 of them are registerable.

After registering the .dlls, all of the reports were tested and they all run fine, including redirecting printout to PD files ... see My Documents for samples of this.